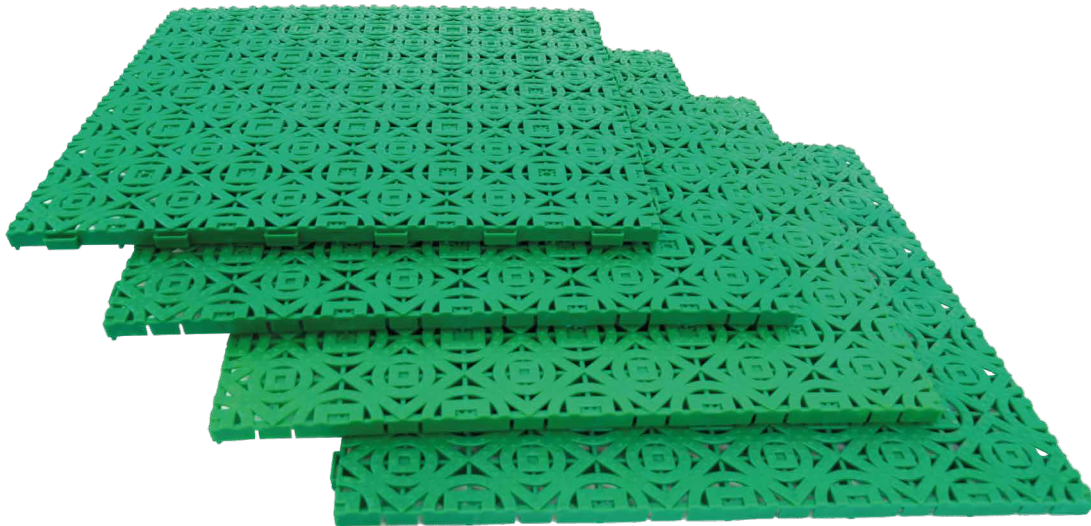






## Index

Our company.....	2
Features.....	3
Uses.....	4
Colours.....	5
Dimensions.....	6



rosenfast



# LOSEPLAST

## Our company

ITM Plastic Tiles

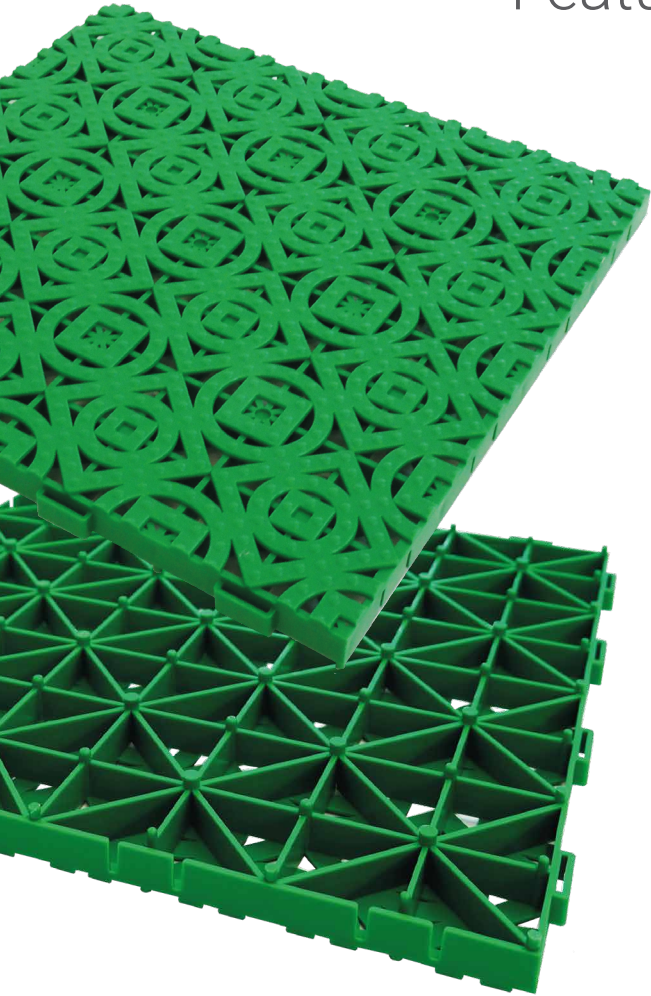
Industrias Tomás Morcillo (ITM) is a Valencian family company with more than 40 years of experience in the plastics product manufacturing industry, at national and at international level.

The company was founded in 1973 with the objective of offering integral plastic injection services.

Our commitment to innovation, the exports, and the high quality standards in our plastic products, has converted the company into a benchmark in the sector.

Currently we sell our products in more than 20 countries.

## Features



Loseplat plastic modular tiles, made of polypropylene, are characterized by their great versatility and the possibility of using them in indoor and outdoor areas.

Prevent slips

Very simple assembly

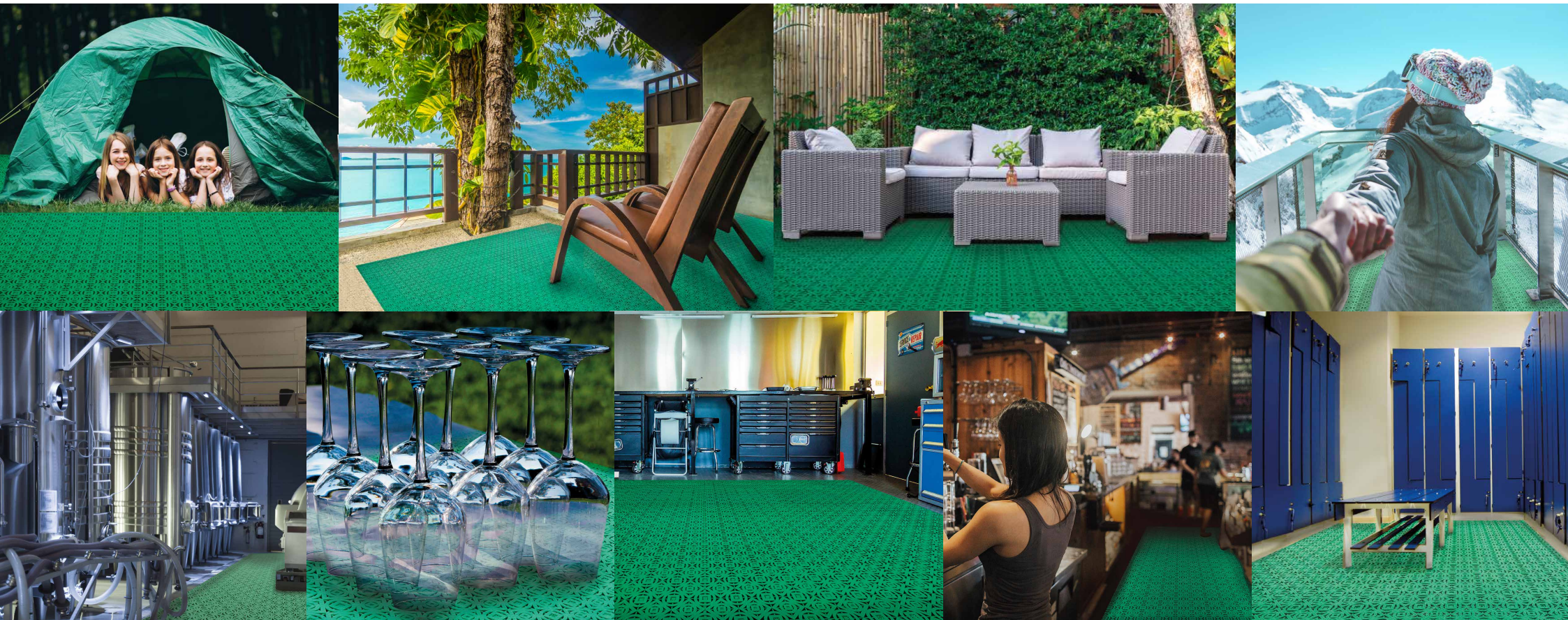
They fit to any surface

Resistant to chemical products and to solar exposure

Suitable for cold environments

They are easy to clean





## Uses Outdoor

LOSEPLAST

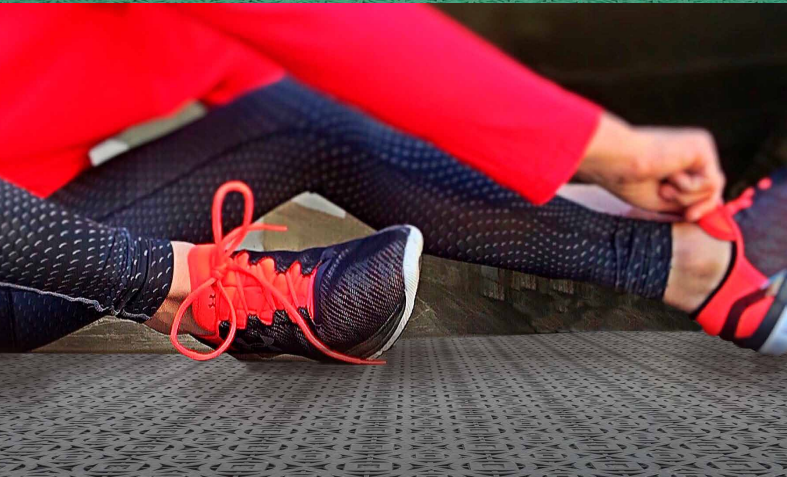
- Garden
- Camping
- Snow areas
- Swimming pools

## Uses Indoor

LOSEPLAST

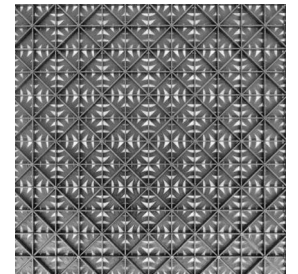
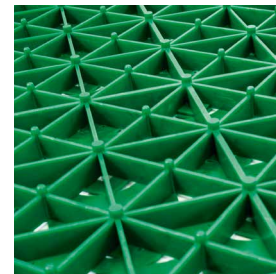
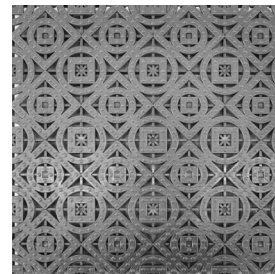
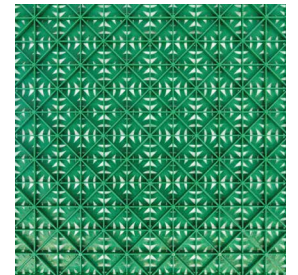
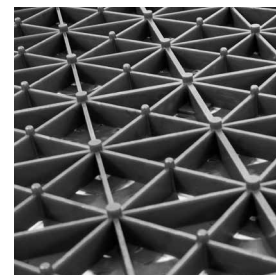
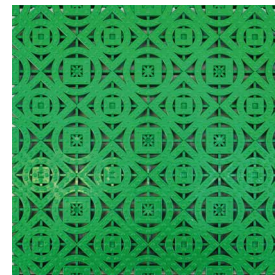
- Dressing rooms
- Hostelry
- Garages
- Workspaces





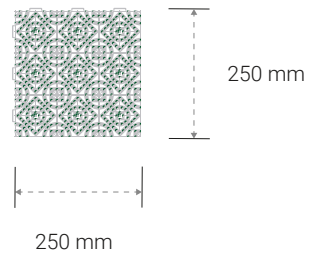
## Colours

green  
gray

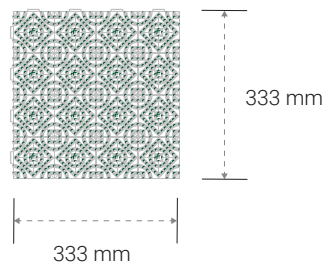


# Dimensions

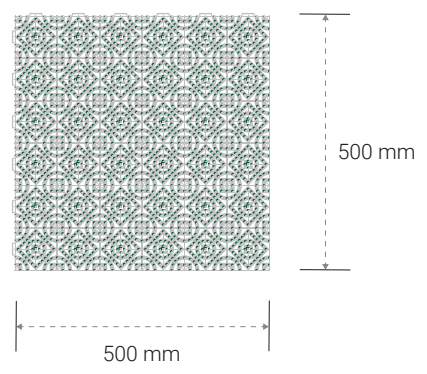
250 mm tile



333 mm tile



500 mm tile





Calle La Fila 5 · Pol.Ind. del Mediterráneo · 46550 Albuixech, Valencia  
Phone number: 00 34 961 417 001 · E-mail: [contacto@loseplast.com](mailto:contacto@loseplast.com)  
[www.loseplast.com](http://www.loseplast.com)